

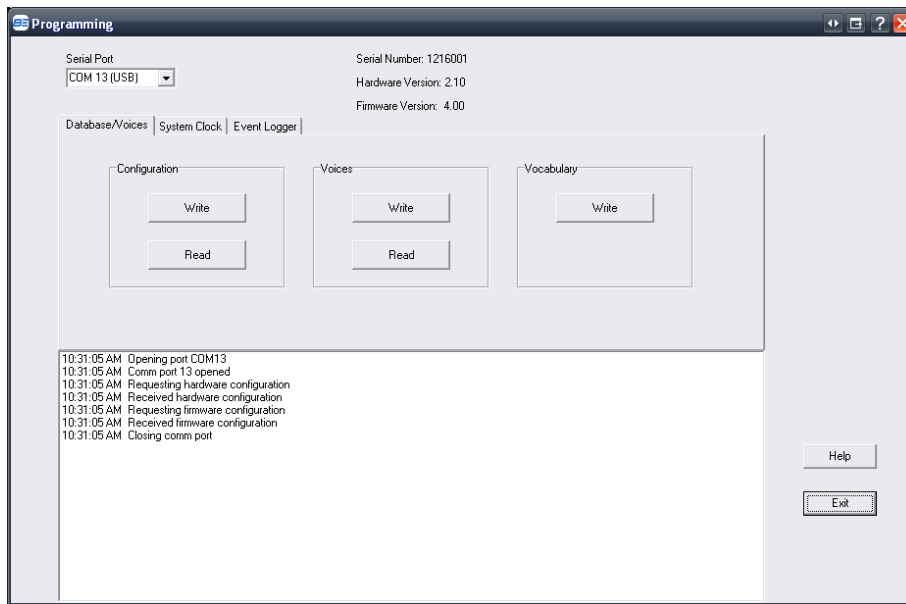
# ProTalk Plus

## System Clock & Event Logger Tutorial (V2 Hardware Only)

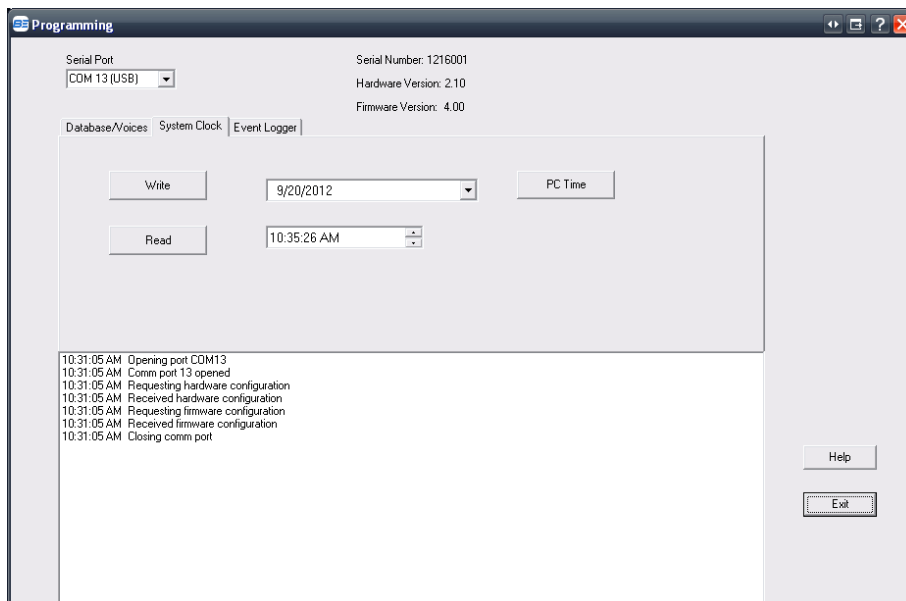
### Configuring The System Clock

The System Clock is a real-time clock operated by a coin-cell battery inside the B1290 that keeps track of the time and date, and is used primarily for the Event Logger feature. The clock is set to MST by default. If the unit resides outside of the MST time zone, the clock can be changed to match the local time.

Launch the ProTalk Plus Database Editor and press the 'Program' heading at the top of the window:



Select the 'System Clock' tab:



# ProTalk Plus

## System Clock & Event Logger Tutorial (V2 Hardware Only)

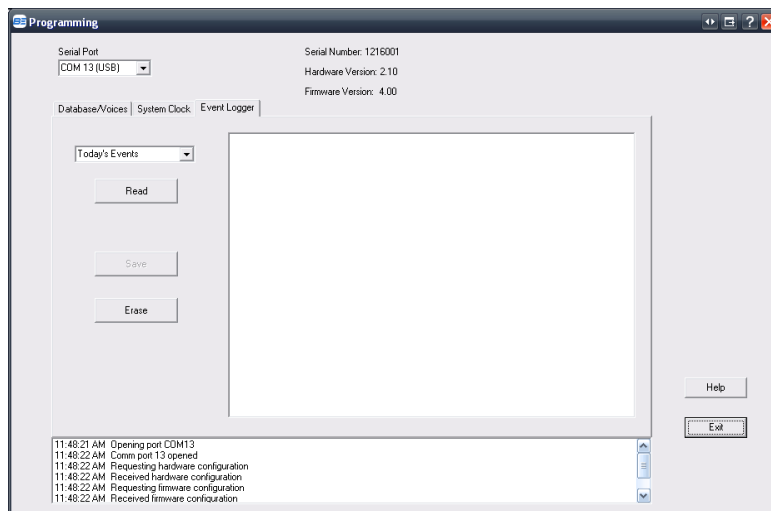
The quickest way to change the time is to press the 'PC Time' button. The software will read the time your PC is set to and program it into the unit. Press the 'Read' button to verify that the time is correct.

To change the date and time manually, highlight (left-click) the field(s) you would like to change, type in the new number(s) and press the 'Write' button. This method would be used if someone were to configure a database at the shop before the unit is to be installed at an out-of-province location for example.

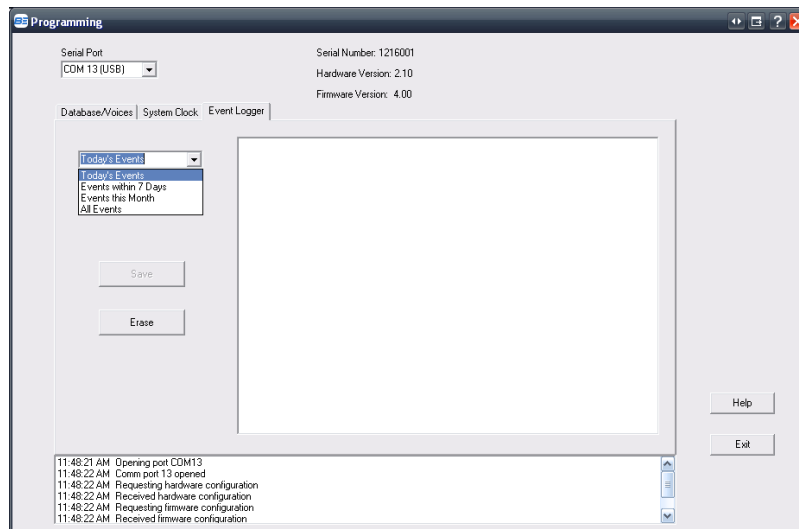
### Using The Event Logger

The Event Logger records a list of time-stamped activities. Refer to the 'Help Contents' under the 'Help' heading in the Database Editor for details on specific activities recorded.

Click on the 'Event Logger' tab in the Programming window:



In the drop-down box on the left-hand-side, select the range of activities you'd like to view:



**BE BARNETT ENGINEERING LTD.**

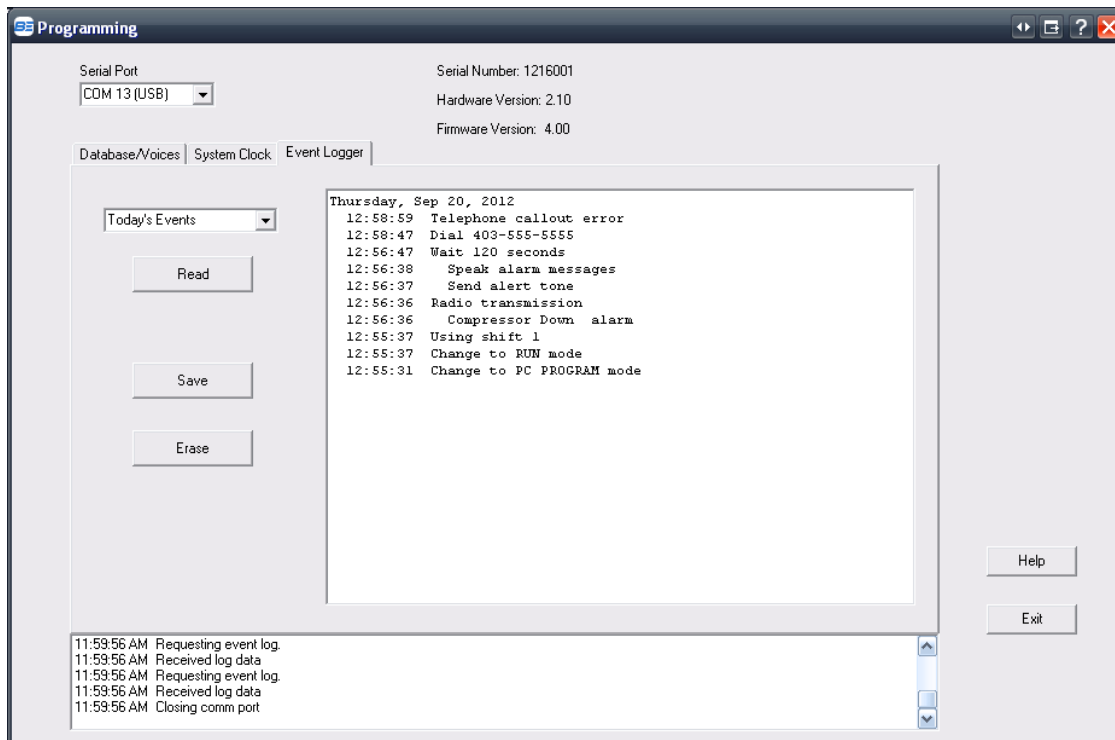
#215, 7710 - 5th Street SE  
Calgary, Alberta  
T2H 2L9

PHONE: 1 (800) 268-2646  
FAX: 1 (403) 259-2343  
www.barnett-engg.com

# ProTalk Plus

## System Clock & Event Logger Tutorial (V2 Hardware Only)

After one of the four options has been selected, press 'Read:'



In this example, the B1290 detected an alarm (Compressor Down) at 12:56:36 and then called-out over the radio immediately thereafter. The unit then waited 2 minutes before it attempted to call an operator over the phone line. Since the phone line was faulty during the dial-out, a telephone callout error was flagged.

In essence, the Event Logger is a tool to aid in troubleshooting site problems.