

ProTalk Link

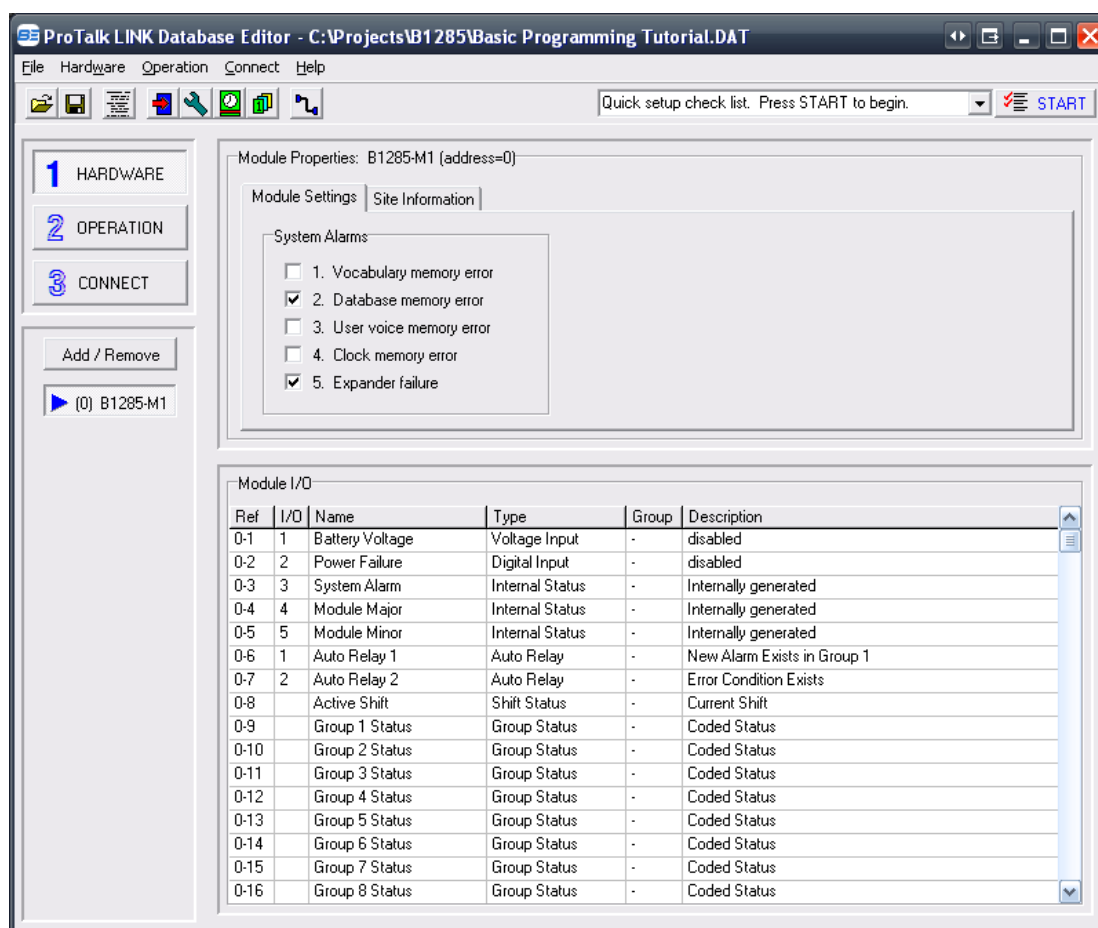
Basic Programming Tutorial

The ProTalk Link Basic Programming Tutorial will walk you through the steps needed to configure a basic database using 3 modules: the M1 (Main module), the T1 (Callout module) and the D1 (Digital input expansion module). This example illustrates programming one alarm input and one voice callout number. The contents of the Barnett Engineering Product CD should be installed to your PC before using this tutorial.

Configure The Database

The ProTalk Link can be configured using the PC software or a by using a touch-tone phone connected to the PGM port. This example uses the Database Editor (PC software). For information on handset programming, follow the examples in the manual.

Attach the program cable, apply power to the M1 (12V or 24V) and open the Database Editor:



ProTalk Link

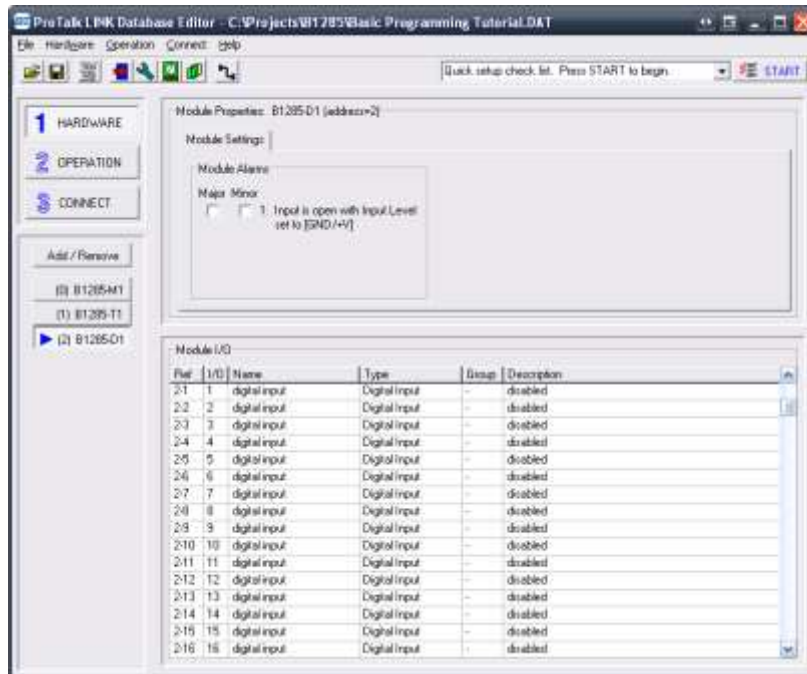
Basic Programming Tutorial

Press the 'Add/Remove' button on the left-hand-side and add the T1 module to address 1 and the D1 module to address 2 using the drop-down boxes:



The modules are assembled and shipped with the physical addresses to match (ie: the M1 module is always address 0, the callout module is always address 1 and the expander modules are always 2 and above – from bottom to top).

Press 'OK' and press the B1285-D1 button on the left-hand-side:



ProTalk Link

Basic Programming Tutorial

Double-click input 1, rename the alarm, select '1' from the 'Using Group' drop-down box and press OK:

[2-1] Digital Input

Alarm Name: digital input

Using Group: disabled

DTMF Tx Code:

Function: Digital Input

Input Level: OPEN / GND

Alarm when: GND

Alarm Format: Latching

Debounce Timer

On Time: 100

Off Time: 100 Off = On

Time Scale: msec sec

Help OK Cancel

[2-1] Digital Input

Alarm Name: Compressor Down

Using Group: 1

DTMF Tx Code:

Function: Digital Input

Input Level: OPEN / GND

Alarm when: GND

Alarm Format: Latching

Debounce Timer

On Time: 100

Off Time: 100 Off = On

Time Scale: msec sec

Help OK Cancel

ProTalk LINK Database Editor - C:\Projects\W1785\Basic Programming Tutorial.DAT

File Hardware Operation Connect Help

Quick setup check list. Press START to begin. START

1 HARDWARE

2 OPERATION

3 CONNECT

Add / Remove

(0) B1205-H1

(1) B1205-T1

(2) B1205-D1

Module Properties: B1205-D1 (address=2)

Module Settings:

Module Alarms:

Main: Minor

1. Input is open with Input Level set to [GND/+V]

Module I/O

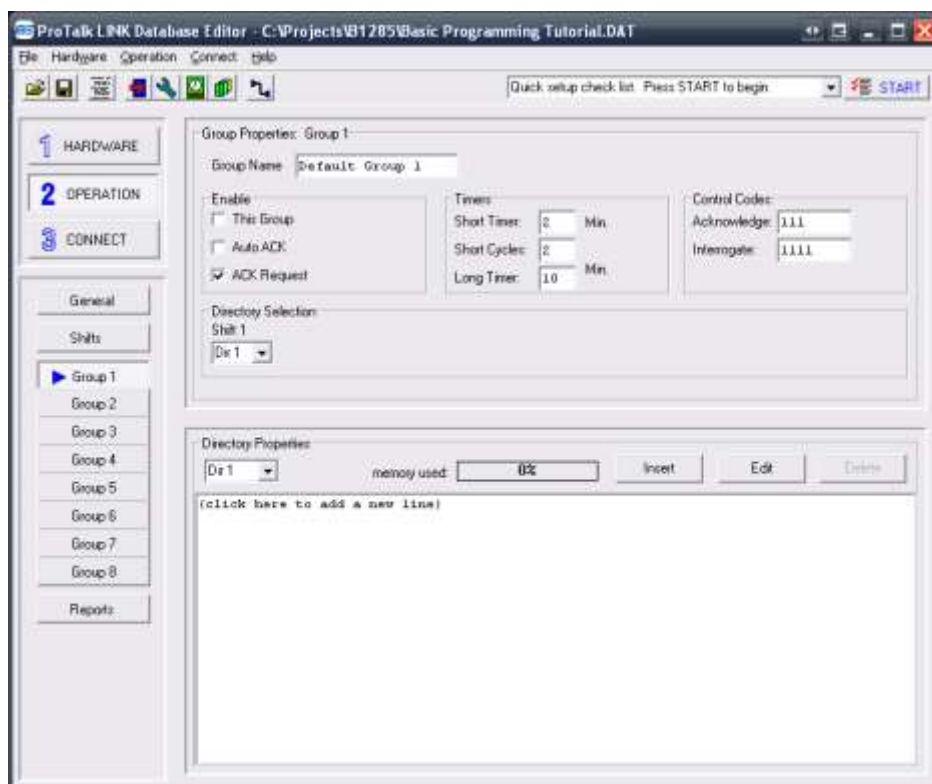
Ref	I/O	Name	Type	Group	Description
2-1	1	Compressor Down	Digital Input	1	Alarm when input is GND, increase fan operation
2-2	2	digital input	Digital Input	-	disabled
2-3	3	digital input	Digital Input	-	disabled
2-4	4	digital input	Digital Input	-	disabled
2-5	5	digital input	Digital Input	-	disabled
2-6	6	digital input	Digital Input	-	disabled
2-7	7	digital input	Digital Input	-	disabled
2-8	8	digital input	Digital Input	-	disabled
2-9	9	digital input	Digital Input	-	disabled
2-10	10	digital input	Digital Input	-	disabled
2-11	11	digital input	Digital Input	-	disabled
2-12	12	digital input	Digital Input	-	disabled
2-13	13	digital input	Digital Input	-	disabled
2-14	14	digital input	Digital Input	-	disabled
2-15	15	digital input	Digital Input	-	disabled
2-16	16	digital input	Digital Input	-	disabled

Press the 'Operation' button on the left-hand-side and then the 'Group 1' button:

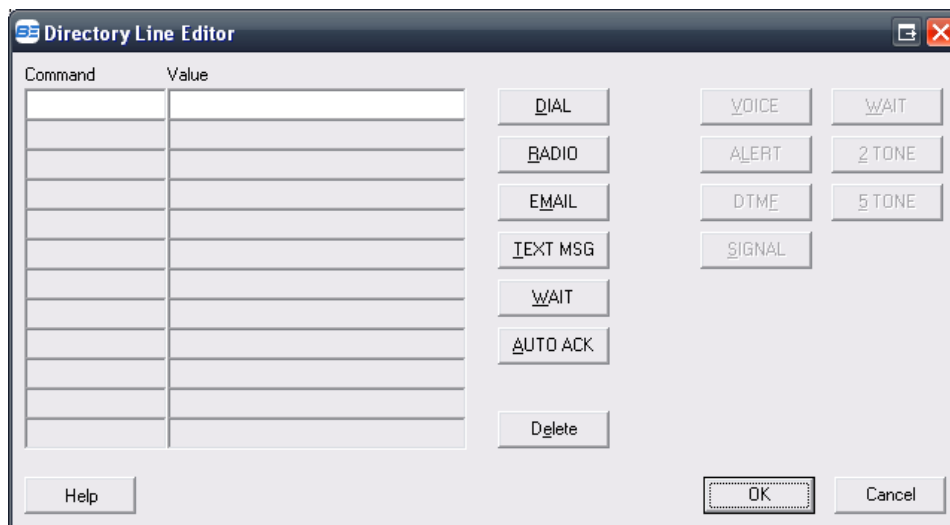


ProTalk Link

Basic Programming Tutorial



Check the 'This Group' box under the 'Enable' heading and then double-click the first line in Directory 1 (selected in Group 1 by default):

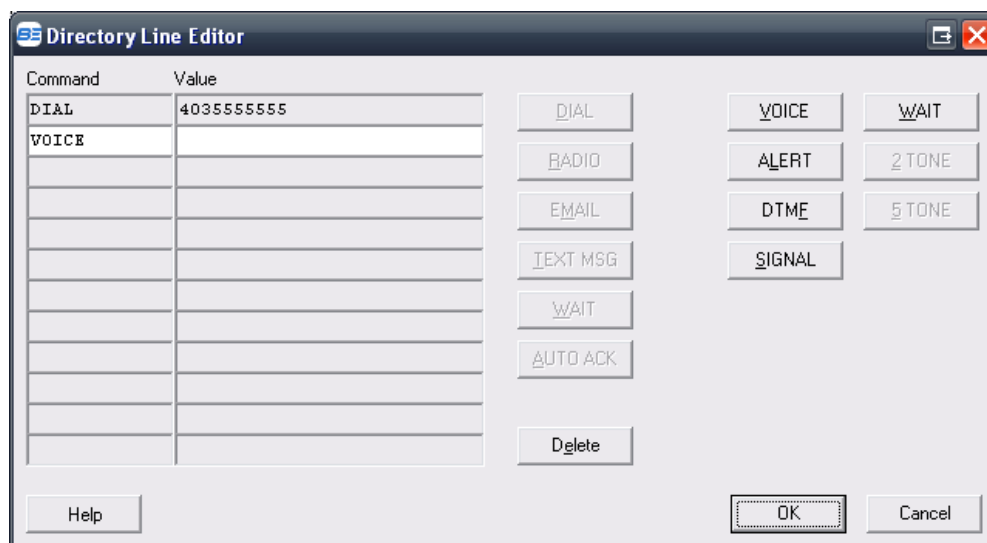


Press the 'DIAL' button and enter the phone number of the person to be called in the 'Value' column beside it. Click on the line below 'DIAL' and press the 'VOICE' button:



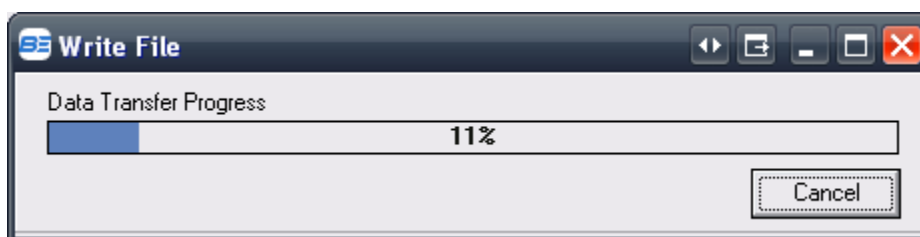
ProTalk Link

Basic Programming Tutorial



Press 'OK.' The first line in Directory 1 now has a dial command, followed by the phone number, and then a voice command.

Now that the basic configuration is complete, the database needs to be sent to the system. Press the 'Connect' button on the left-hand-side. Since the 'Database' button is already highlighted, select the appropriate COM port in the 'Serial Port' drop-down-box (it will automatically be selected when using a USB cable) and press the 'Send' button in the upper pane of the window:



The database has now been transferred. You may want to save the database for future reference. To do so, select the 'File' heading, then 'Save As...' Name the file and save it to the appropriate location:



ProTalk Link

Basic Programming Tutorial



Record Voices

The next step is to program voices for the Site ID and Alarm 1. There are 2 ways in which voices can be recorded; using the built-in Voice Editor or with a touch-tone phone connected via the TEL port on the M1 module. This example illustrates using a phone. Refer to the help file in the software for details on how to use the editor.

When the handset is lifted, “No Alarms. Enter Command Code” will be spoken. Wait several seconds and “Enter Program Code” will be spoken:

*You: Press 1***

Link: “Enter Voice Code.”

*You: Press 0***

Link: “Site is.....”

*You: Press 2***

Link: The unit will beep.

*You: This is when you begin speaking the site identifier. Once you’ve spoken the site ID, the Link will detect your silence and play back the voice. If adequate, press #** to return to the voice code prompt. If you would like to re-record the voice, enter 2** again.*

*Be sure that you don’t enter ** at the end of the recording, as the tones will be recorded with the voice and will disrupt the callout/acknowledgement process.*

Link: “Enter Voice Code.”

*You: Press 2 ***

Link: “Block 2 Input 1 is.....”

*You: Press 2***

Link: The unit will beep.



ProTalk Link

Basic Programming Tutorial

*You: This is when you begin speaking the alarm for input 1 of the D1 module. Once you've spoken the alarm, the Link will detect your silence and play back the voice. If adequate, you can hang-up the handset, or press ** to advance to alarm 2. If you would like to re-record the voice, enter 2** again.*

Testing

Connect the T1 module to a POTS line and, using a piece of wire, assert alarm 1 to ground and hold it there.

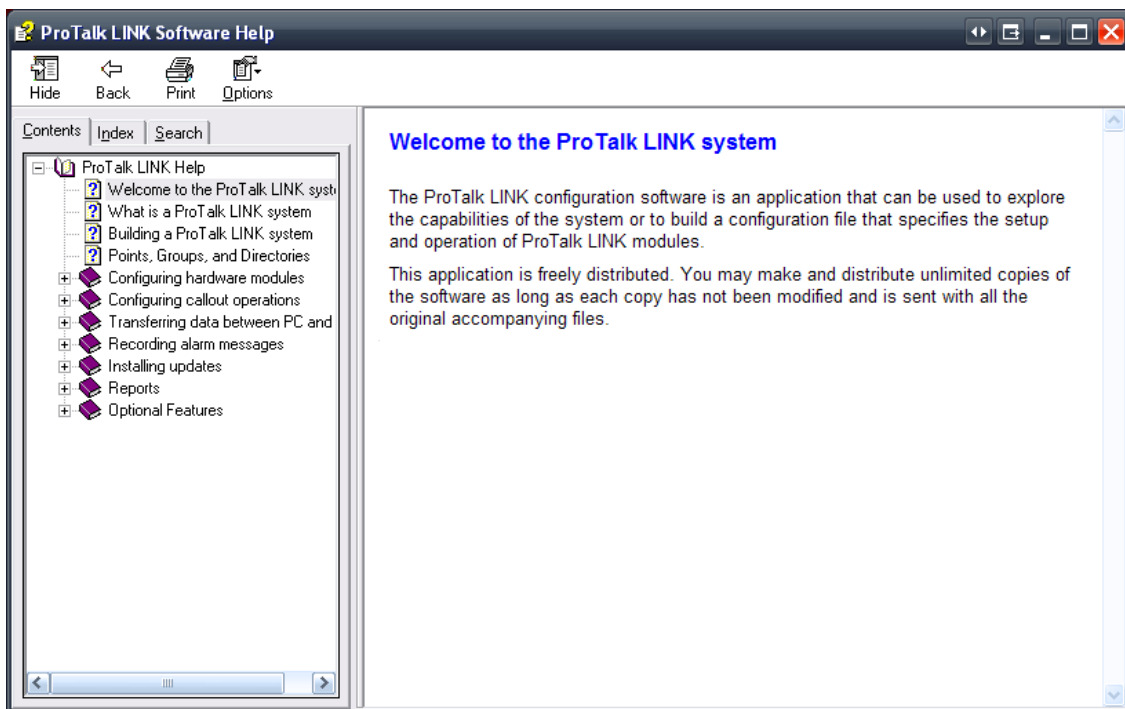
The unit will call the number in directory 1 and announce the site identifier followed by the alarm 1 voice programmed earlier. The Link will then speak "Enter Acknowledge Code."

To acknowledge the alarm, enter 111 (the default acknowledge code) when requested to do so. The Link will respond with the Site ID, followed by "Alarms Acknowledged." "Enter Command Code" will be spoken afterwards, but can be ignored.

Your ProTalk Link is now tested and functioning properly.

Help Files

There are many more configurations and features available in the Link. For detailed information on how to use them, refer to the help file by clicking on the 'Help' heading in the software, followed by 'Help Contents.'



For specifications, drawings, etc., refer to the manual on the CD, or visit our website for further information.

