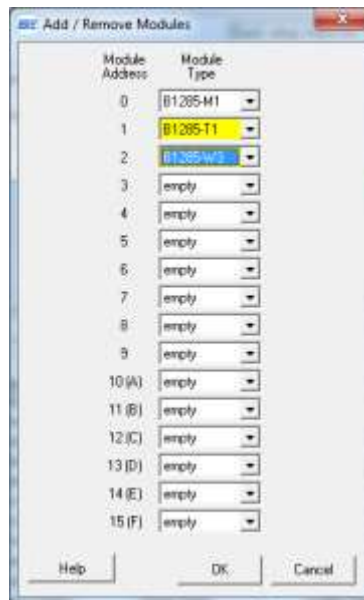


# ProTalk Link

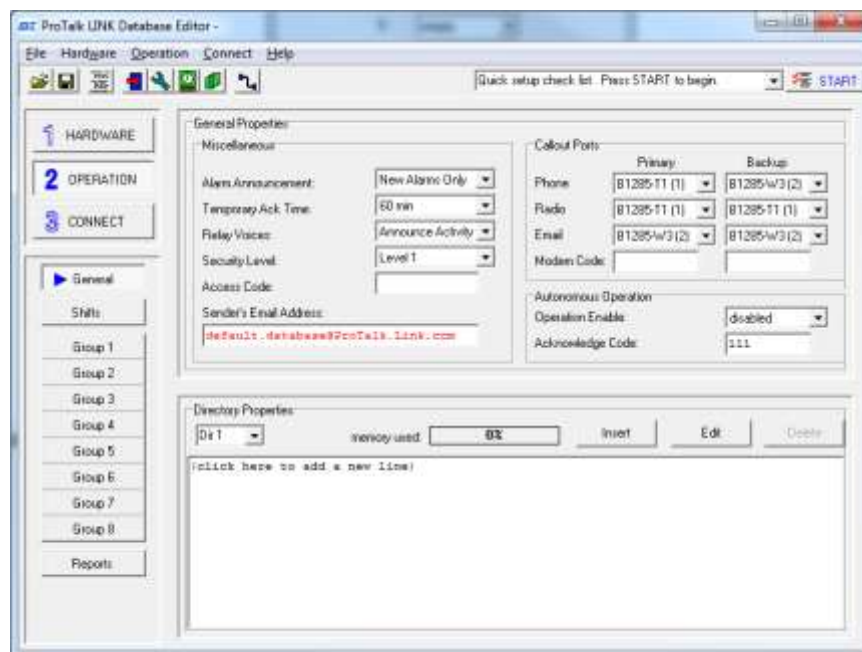
## Backup Callout Tutorial

This tutorial will cover the steps required to configure a Link system to be able to perform callouts on a back-up module in the event that the primary module fails.

Launch the Link Configuration Software, press the 'Add/Remove' button in the 'Hardware' section and add the two callout modules. In this example, the T1 and W3 modules will be used:



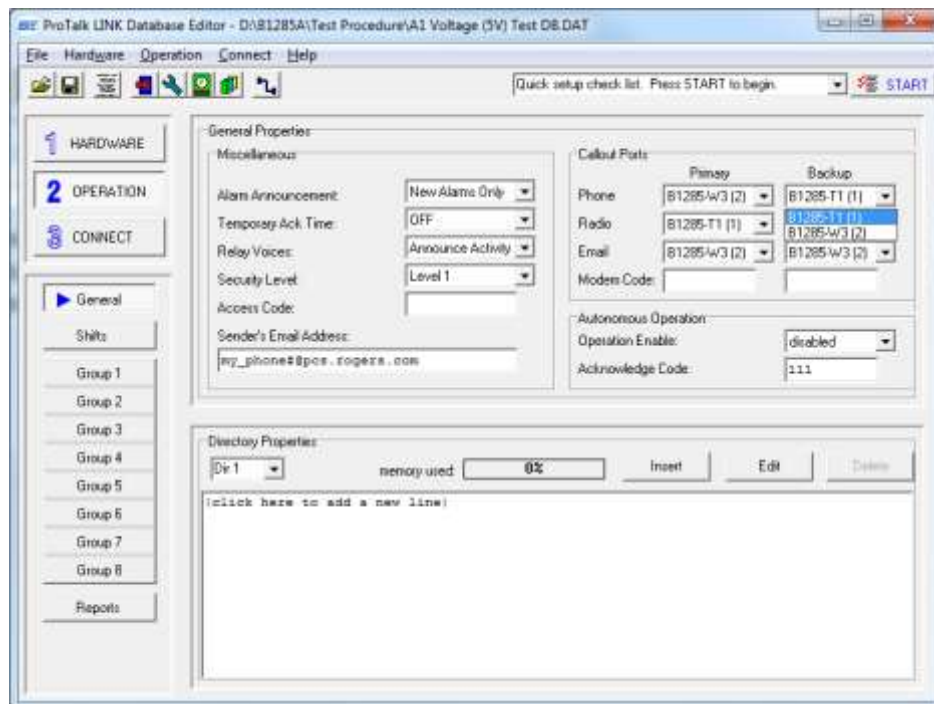
Next, press the 'Operation' button:



# ProTalk Link

## Backup Callout Tutorial

Since the T1 was set to address one, it automatically becomes the primary callout device. The W3 then becomes the backup device in the event that the T1 fails. To change this to be the opposite, simply change the modules accordingly in the drop-down-box in the upper right-hand corner of the window:



Radio callouts will always use the T1 module and SMS text messages will always use the wireless module, irrespective of what the primary or backup modules are set to.

For more additional tutorials, such as the *Basic Programming Tutorial*, refer to our website at <http://barnett-engg.com/support/Tutorials.aspx>.

