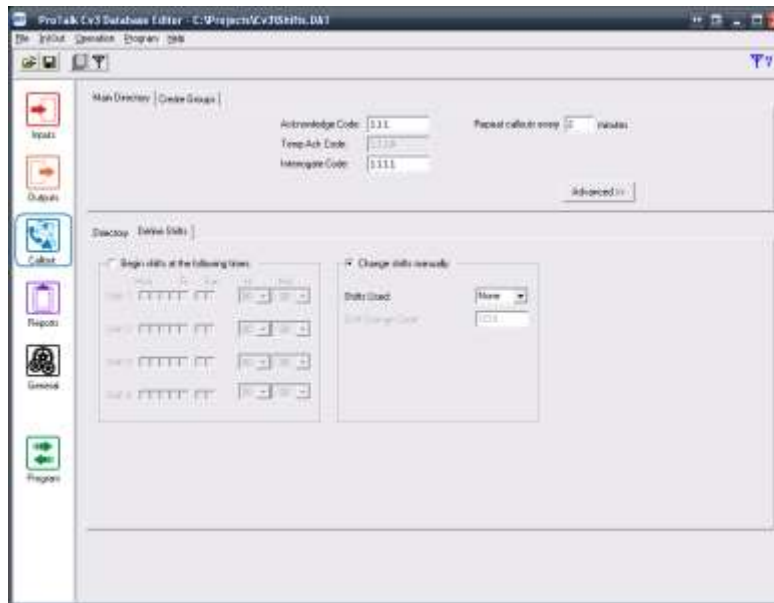


Shifts Tutorial

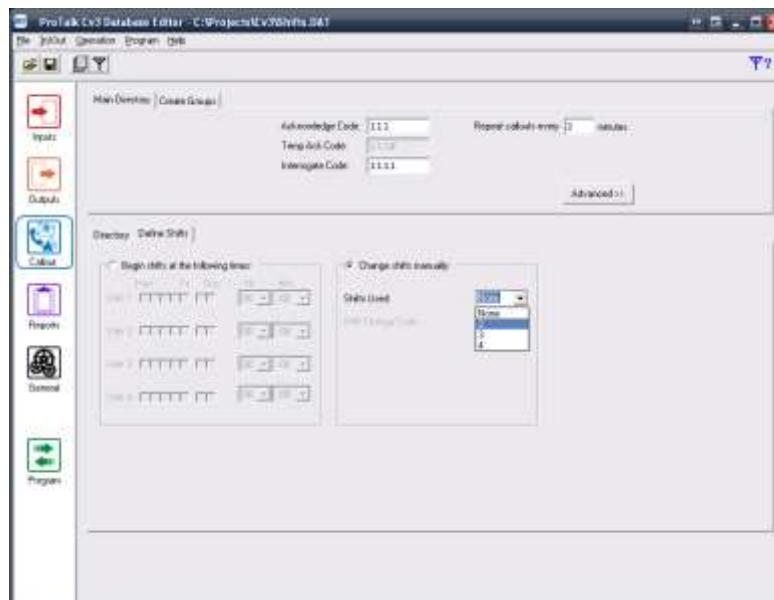
‘Shifts’ is a programming feature that enables alarm inputs to use more than 1 directory. Shift changes (i.e. changing the directory) can be done manually using a programmable shift change DTMF code (during a voice call or SMS text), by using an input, or automatically (by day and time). The following example illustrates the use of 2 shifts (1 operator on the day shift and 1 operator on the night shift).

Manual Shift Change Using A DTMF Code:

Open the configuration software and press the ‘Callout’ button in the left column and select the ‘Define Shifts’ tab:

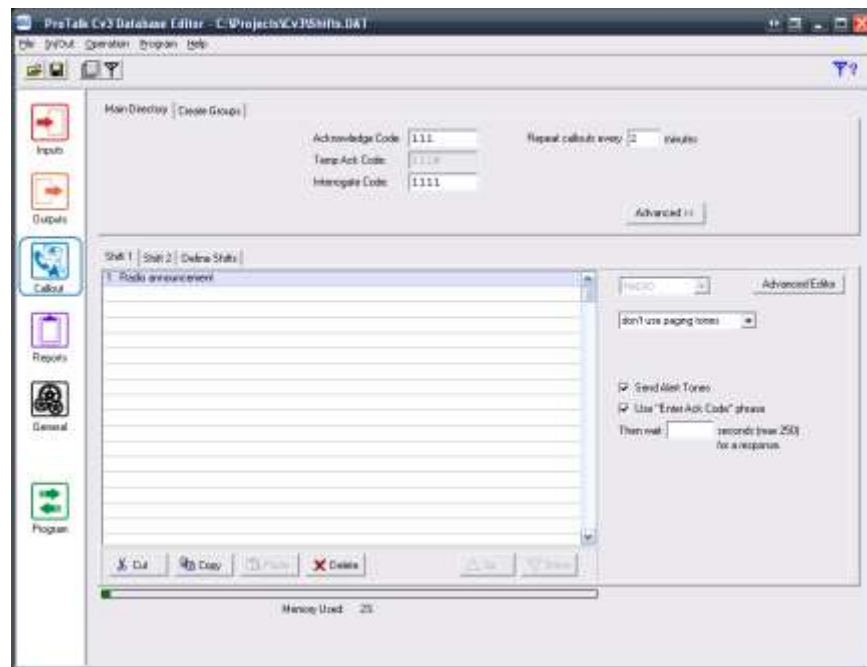


2 shifts are selected under the ‘Shifts Used’ field:

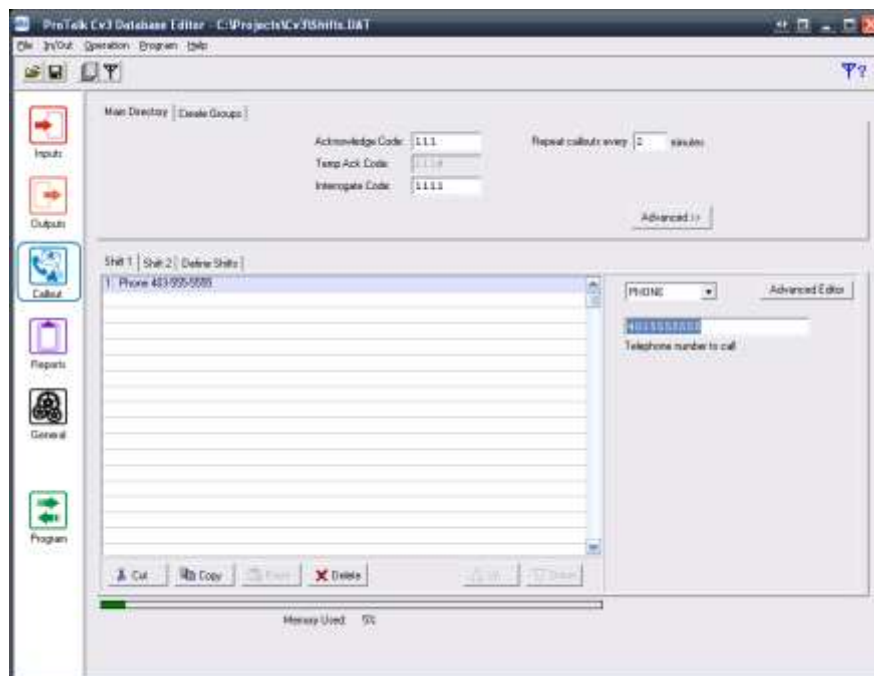


Shifts Tutorial

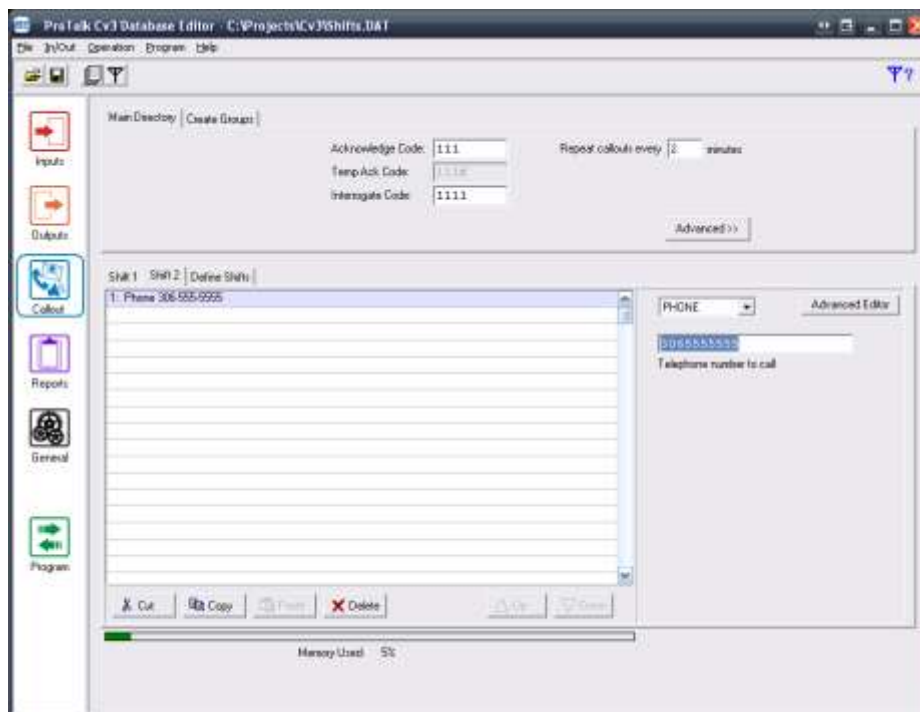
Notice that the 'Directory' tab has been replaced with 'Shift 1' and 'Shift 2' (to the left of the 'Define Shifts' tab). Press the Shift 1 tab:



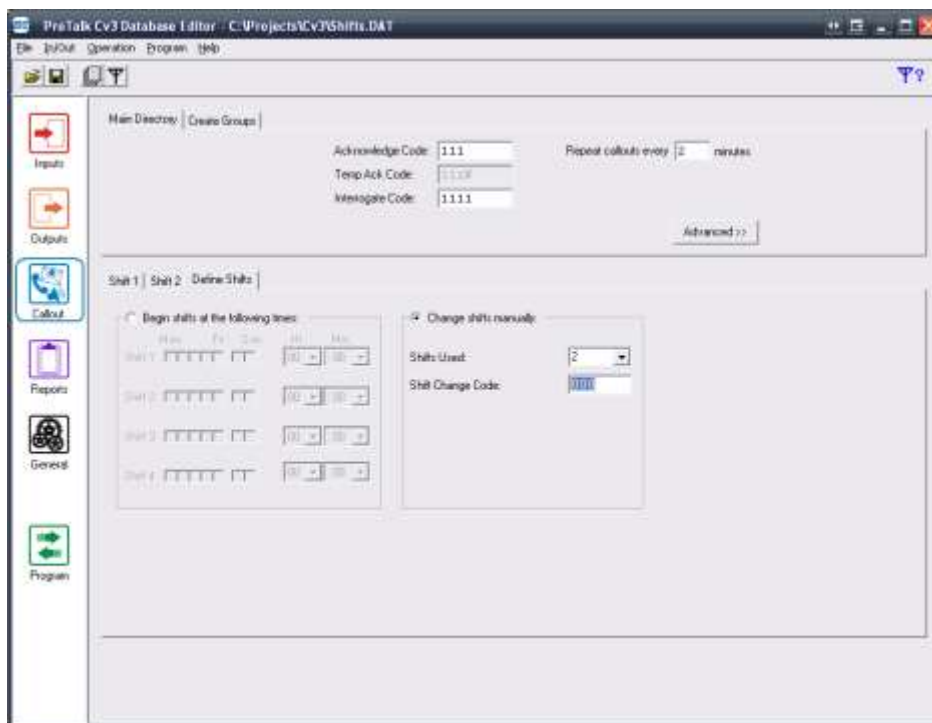
Delete the 'Radio announcement' and enter the day shift operator's phone number as follows:



Press the 'Shift 2' tab and repeat the previous step for the night shift operator:



Going back to the 'Define Shifts' tab, the 'Shift Change Code' is set to 000 by default (which can be changed):



Shifts Tutorial

One way to change the shift is to call the Cv3 and wait for it to answer. If there aren't any alarms present, the Cv3 will speak the Site ID followed by "No Alarms" and "Enter Command Code." Enter 000 (the shift change code is one of the command codes). The Cv3 will respond with the Site ID followed by "Change To Shift 2." Using a Touch-Tone phone plugged into the PGM port will accomplish the same task.

Another way to change the shift is to send an SMS text with 000 to the Cv3 from your cell phone. The Cv3 will then confirm it received the message and made the change by sending an SMS text with the Site ID, followed by "Change to shift 2."

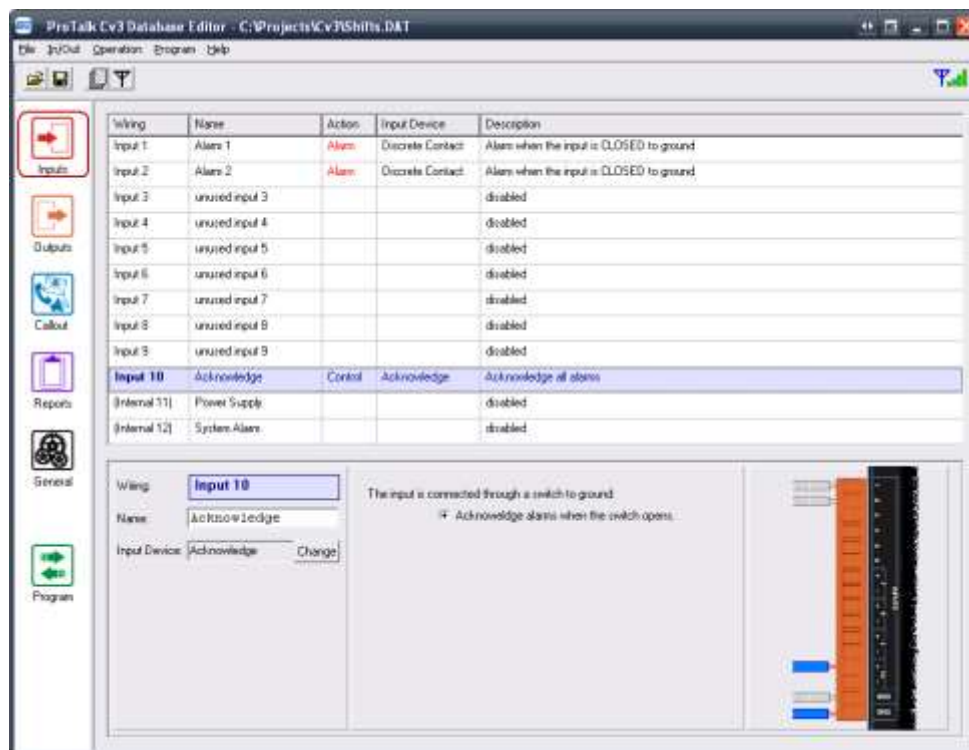
If more than 2 shifts are used, a specific shift can be jumped to instantly from any other shift (as opposed to having to enter the code multiple times to get to the desired shift). This is done by appending the desired shift number to the end of the shift code. For example, if the desired shift is 4 and the current shift is 1, you would enter 0004.

If the current shift is unknown, its status can be determined by entering the 'Shift Interrogate Code.' This is done by appending the end of the shift code with # (000#). The Cv3 will then respond with the current shift.

Manual Shift Change Using A Control Input:

A shift can be changed using an input configured as a 'Control' type. Input 10 is defaulted as a control input and can be changed from 'Acknowledge' to 'Shift' (though any input can be configured as a control type).

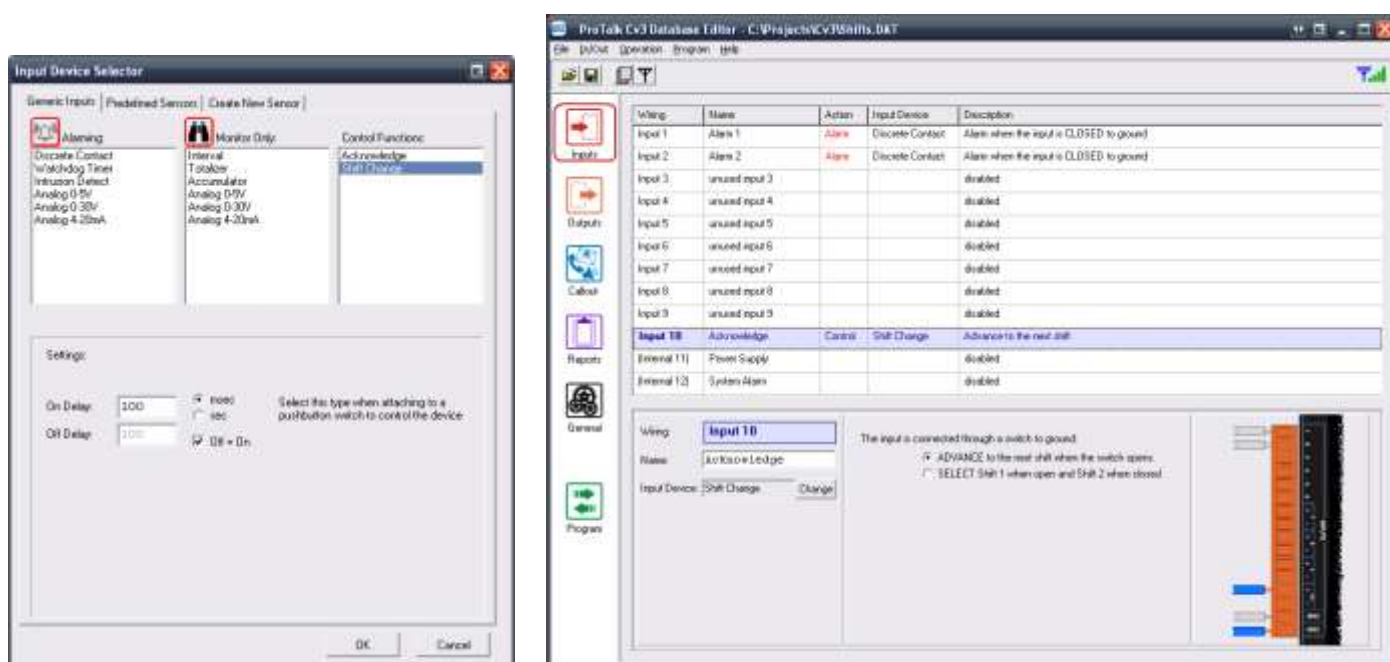
Press the 'Inputs' button at the top of the left-hand column and highlight Input 10:



ProTalk Cv3

Shifts Tutorial

Press the 'Change' button in the lower left-half of the window, select 'Shift Change' in the upper right corner of the pop-up window and then press 'OK':



By default, the input (either the + or – terminals) should be grounded using a switch of some kind (toggle, push-button, relay, etc.). The shift will advance when the input detects that it is open. Any subsequent shift advances requires that the input be grounded and then opened again. To identify what shift is currently being used, the input 10 LED on the top of the Cv3 will be off for shift 1, solid green for shift 2, flashing green for shift 3 and flashing orange for shift 4.

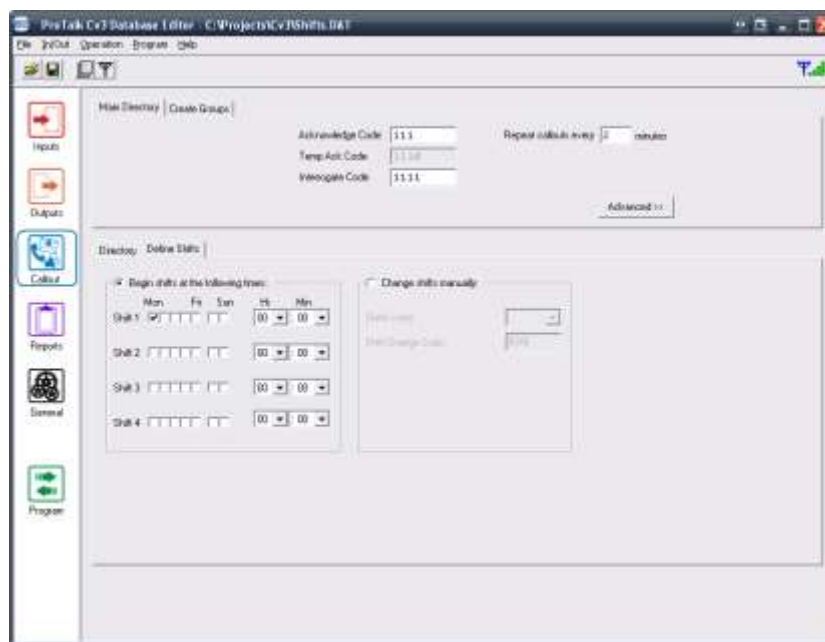
Since only 2 shifts are being used in this example, 'SELECT Shift 1 when open and Shift 2 when closed' may be a more appropriate setting when using a SPST toggle switch, as the shift status is also evident based on the position of the bat. This option is selected in the lower half of the previous window.

Shifts Tutorial

Automatic Shift Change:

Shifts can also be changed automatically without any outside intervention required.

Going back to the 'Callout' section and under the 'Define Shifts' tab, select 'Begin shifts at the following times:'



The days and times for each shift change are selectable. In the following example, Shift 1 begins at 6:00AM every day of the week, and Shift 2 begins at 6:00PM every day of the week.

