

Custom Shift Feature

This application note describes a method of quickly changing the dialing sequence of a ProTalk Cv3. This feature is available in firmware version 2.32 and higher.

This firmware handles shifts the same way as previous versions where a particular shift is selected to have the unit dial out of specified directories. It also adds a Custom Shift feature where three digits, specified at run time, determine the new callout sequence. When using this feature, a TEXT MSG command will now automatically be followed by a voice call to the same number if the alarm isn't acknowledged. See the *Setup* section and the example on the last page for more details.

In both cases, the selected shift will be retained during a power cycle and can be interrogated or changed either by sending the unit a text message or DTMF keystrokes (number pad on your phone).

Introduction:

Both the traditional shift operation and the Custom Shift operation are controlled by either text message or DTMF.

When sending a text message to the Cv3, the receipt of the phrase 'SHIFT=' followed by additional characters will result in the following actions:

Received Phrase	Action	Sample Text Reply
SHIFT=N (N=1 . . 4)	Change to shift N	"Change to shift 2"
SHIFT=WXY	Callout using the main directory lines W then X then Y	"Change to shift 237"

If using DTMF, the receipt of the shift change code (entered when calling the unit and hearing the phrase "Enter Command Code") followed by additional characters will result in the following actions:

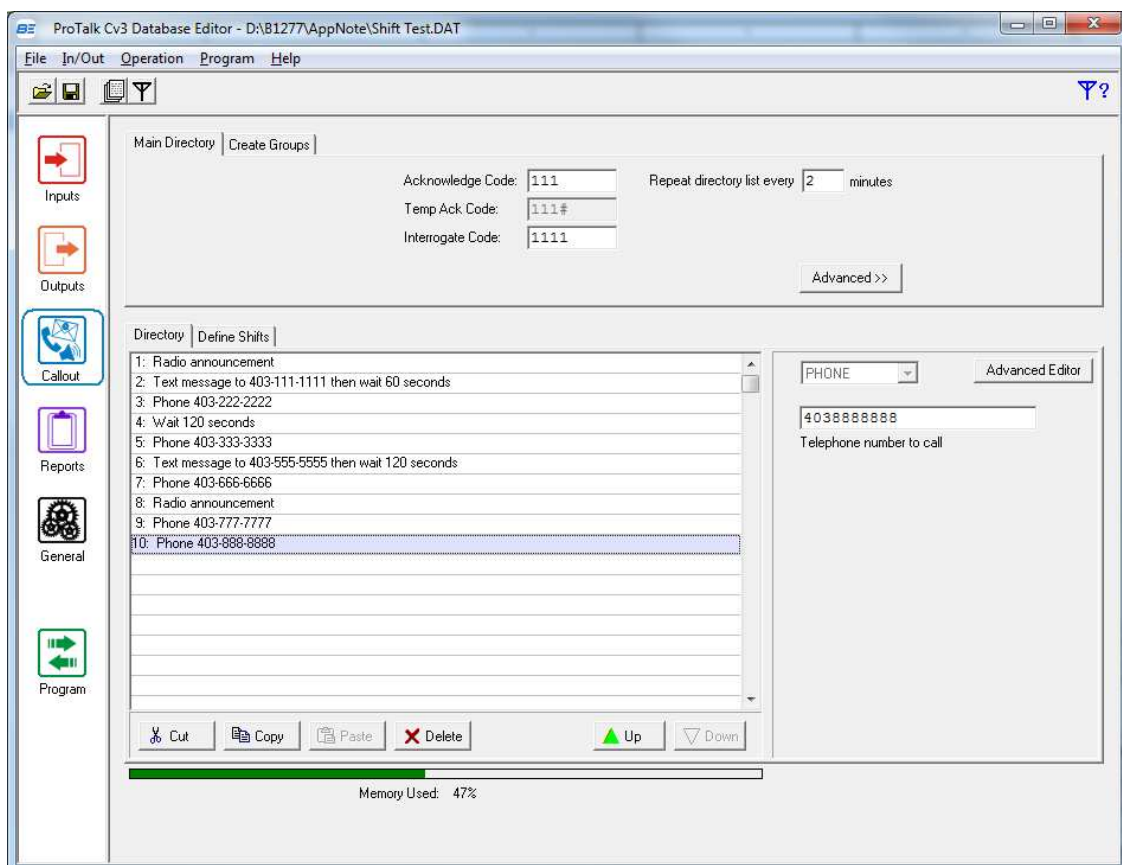
Keystrokes, Where The Shift Change Code is ABC	Action	Sample Spoken Reply
ABC	Advance to the next shift	"Change to shift 2"
ABC N (N=1..4)	Change to shift N	"Change to shift 2"
ABC #	Interrogate the current shift value	"Shift 1" or "Shift 2 3 7"
ABC WXY Z* *(Z=W+X+Y)	Callout using the main directory lines W then X then Y	"Change to shift 2 3 7"

Custom Shift Feature

Setup:

- Using the ProTalk Cv3 Database Editor, enter up to ten lines of callout commands in the main (or Group 1, Shift 1) directory. Any additional lines in the directory are ignored.
- Configure the Shift Change Code (up to 7 digits) as the prefix for the new shift command. If there aren't any shifts enabled and you'd like to change the code from the default of 000, use the drop-down-box in the 'Callout' section of the software to select another shift, change the code, and then change the shifts selection back to 'None.'
- Make sure there aren't any inputs configured as a Shift Change control function.
- If the directory line is specified as a TEXT MSG command, the unit will send a text message and then place a voice call to the same number. For this sequence, specify a wait time with the TEXT MSG command that will be used as the time between sending a text message and placing the associated voice call.

Setup Example:



Custom Shift Feature

Operation using a Text Message for control:

- Send the Cv3 a text message that contains the phrase SHIFT= followed by a single or three digit shift number.

Text Message Example:

- If you are choosing to callout using lines 6 and then 7 and then 0 (10),

Send a text message that reads:

```
SHIFT=670
```

The Cv3 logs the change and responds with a text message that reads:

```
Change to shift 670
```

Operation using DTMF for control:

- Enter the Shift Change Code, followed by:
 - three single digit line numbers from the main directory (for the tenth line, enter '0'), followed by:
 - a single summation digit. The summation digit is the units portion of the sum of the three line number digits; it is used to prevent entering a wrong selection.

DTMF Example:

- If the shift change code is 12345, and you are choosing to callout using lines 6 and then 7 and then 0 (10), then the sum is $6+7+10=23$, so the units digit is 3.

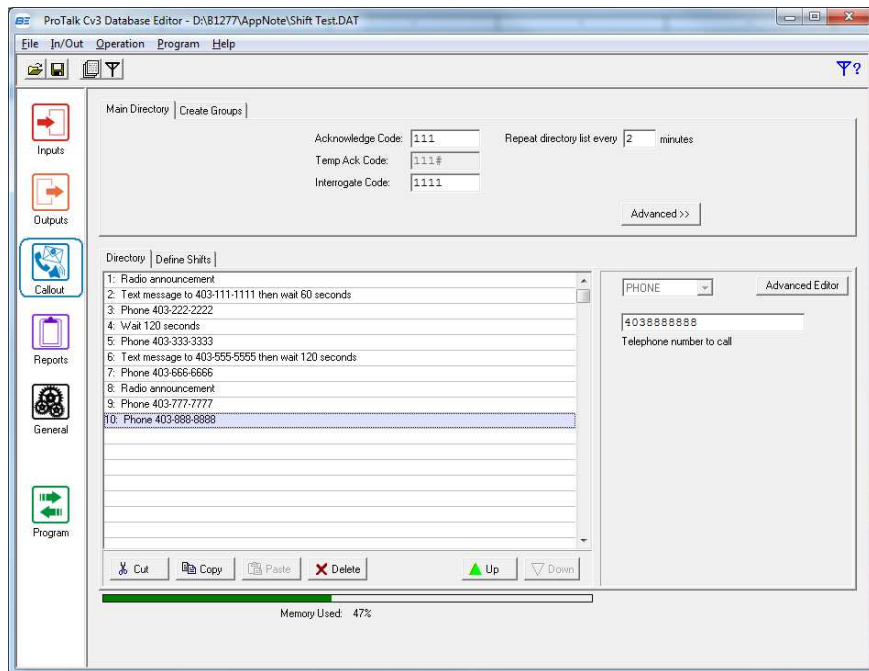
Enter: 12345 670 3

The Cv3 logs the change and responds with "Change to shift Six Seven Zero"

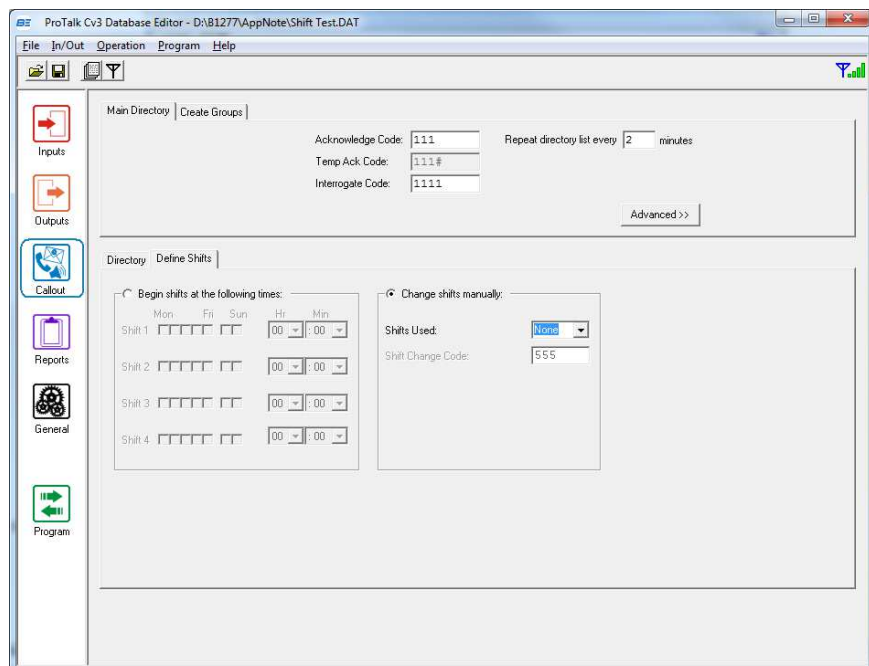
Custom Shift Feature

Callout Operation Example:

In the following configuration, 10 commands are entered in the main directory:



The shift change code has been changed to 555:



Custom Shift Feature

The shift change code is 555 and lines 6, 7 and 0 (10) have been chosen as the shifts, so to enter the shifts via text message, send:

Shift=670 (the letters are not case sensitive and make sure that there are no spaces between characters)

The Cv3 logs the change and responds with the text: "Change to shift 670"

To perform the same action using a voice call:

Enter: 555 670 3 when prompted to "Enter Command Code"

The Cv3 logs the change and responds with "Change to shift Six Seven Zero"

After the change is made, when an alarm occurs, the callout sequence operates as follows:

When the Cv3 detects an alarm:

1. A text will be sent to 403-555-5555 (instruction from line 6).
2. The Cv3 will then wait 120s to give the recipient time to enter the acknowledge code.

If the alarm isn't acknowledged:

3. The Cv3 makes a voice call to the same number (403-555-5555).

If the alarm isn't acknowledged:

4. The Cv3 makes a voice call to 403-666-6666 (instruction from line 7).

If the alarm still hasn't been acknowledged:

5. A call will be made to 403-888-8888 (instruction from line 10).

If the unit hasn't been acknowledged, it will then wait 2min at the end of the directory and begin calling again from line 6.